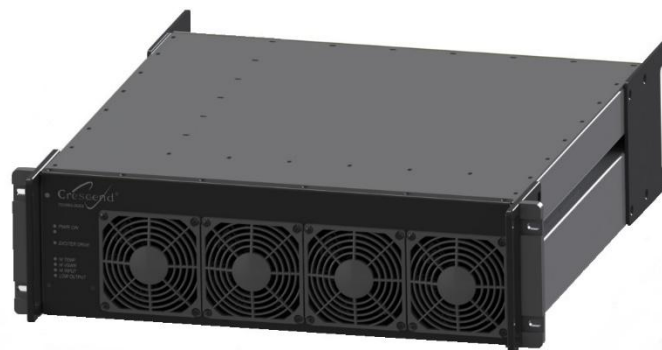


# P35 Series VHF Power Amplifier



## General Specifications

### 150-174 MHz 350 Watts Output Power

- Frequency Range: 150-174 MHz
- Duty Cycle: 100%
- FM/constant envelope modulation
- Operating Voltage: 110 or 220 VAC
- Current Consumption: 10 A (max) @ 110 VAC
- Spurious & harmonics exceeds FCC requirements
- Input/output Impedance: 50 ohms (Nominal)
- Load VSWR Tolerance: full power, sustained operation 1:5:1 or better, VSWR protected above 2:5:1
- Indicator LEDs: power on, exciter drive, high temp, high VSWR, high input, low output
- Input/output Connector: type 'N' female
- DB15 includes alarm and status pins, power control, and Form C relay output
- Internal isolator included
- Cooling Method: fan forced air over heat sink
- Operating Temp Range: -30°C to +60°C
- Storage and Transport Temp: -40°C to +70°C
- Humidity: 80% at +40°C (non-condensing)

### Power Input/output Range

Model Description*	Required Power Input
P35-5E3-PS(2)-C8-001	5-10 W
P35-10E3-PS(2)-C8-001	10-20 W
P35-20E3-PS(2)-C8-001	20-50 W
P35-50E3-PS(2)-C8-001	50-100 W

- Power Output: 350 Watts, set at factory for all models listed above

### Dimensions and Weight

- Dims: 5.25" H x 20" D x 19" W
- Weight: 35 lbs

### Optional Features Available

- 220 VAC operating voltage

*These are preliminary specifications and are subject to change.*

100 High Grove Blvd., Glendale Heights, IL 60139

P 847.908.5400, F 847.908.5408

[sales@crescendrf.com](mailto:sales@crescendrf.com)

[www.crescendrf.com](http://www.crescendrf.com)